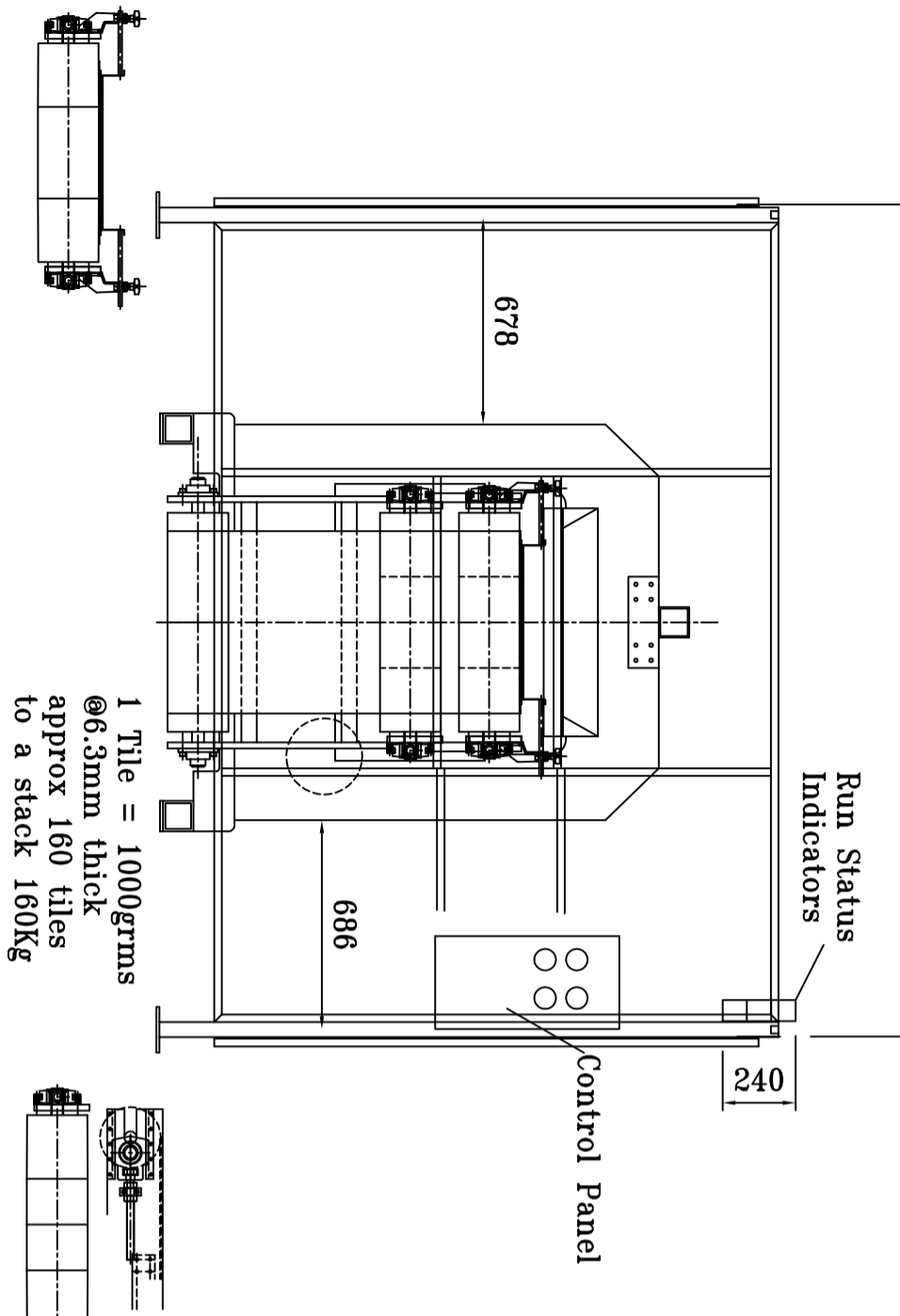
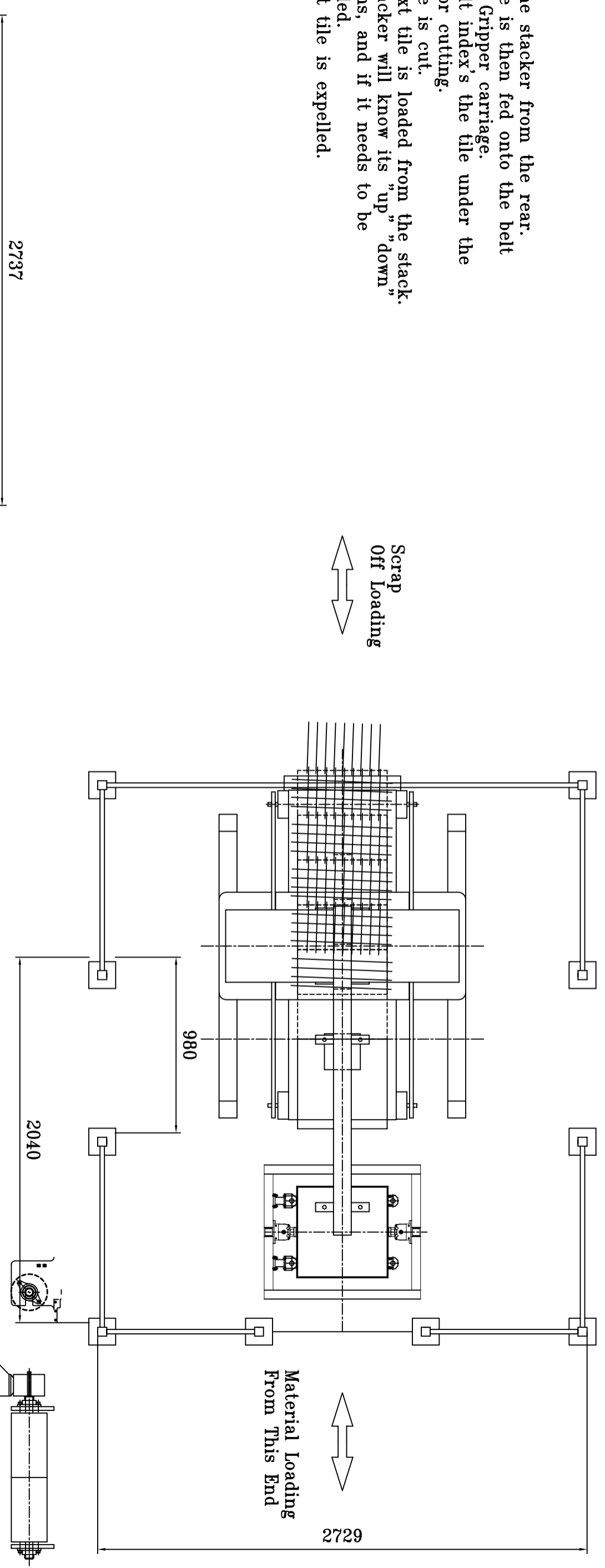


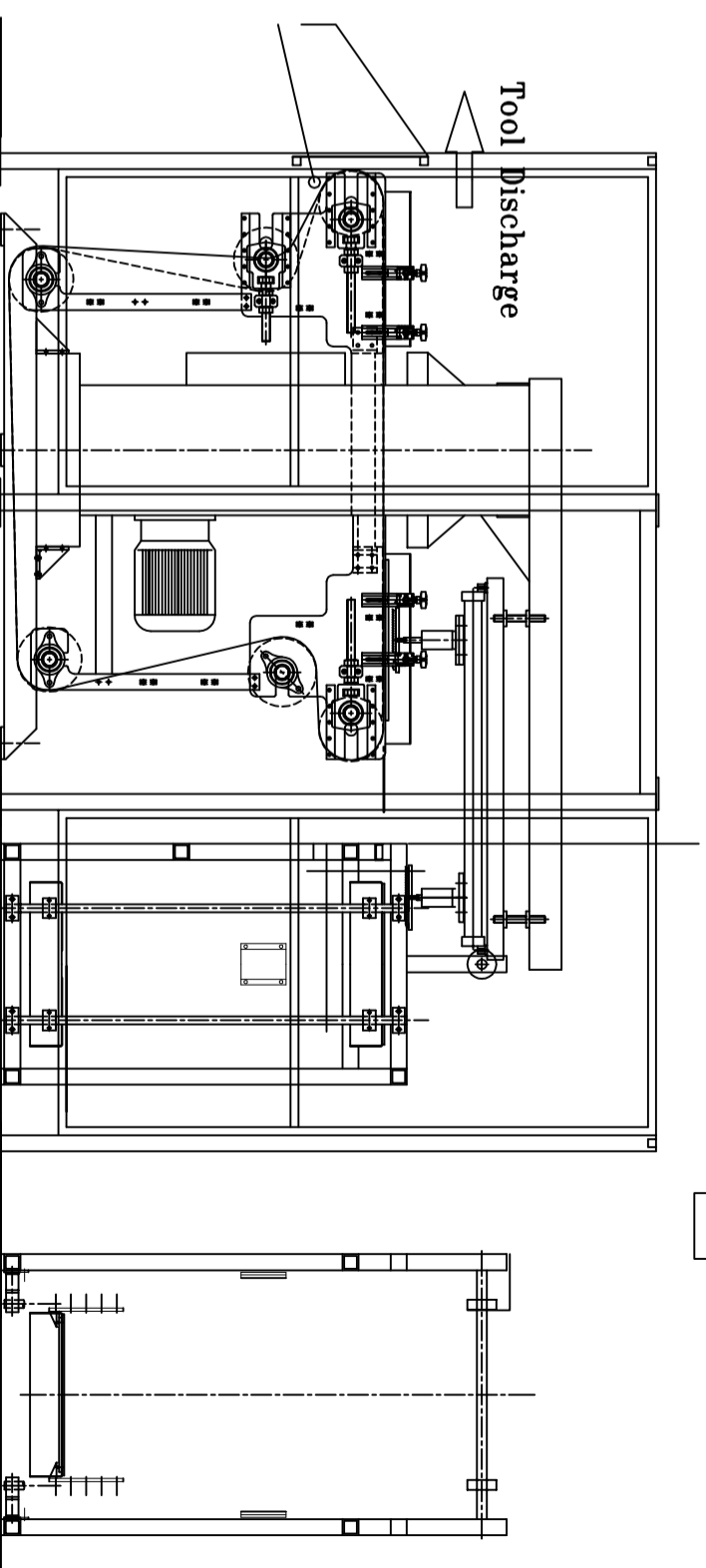
- 1 Load the stacker from the rear.
- 2 The tile is then fed onto the belt by the Gripper carriage.
- 3 The belt index's the tile under the head for cutting.
- 4 The tile is cut.
- 5 The next tile is loaded from the stack. The stacker will know its "up" "down" positions, and if it needs to be re-loaded.
- 6 The cut tile is expelled.

Scrap  
Off Loading

Material Loading  
From This End



1 Tile = 1000grms  
@6.3mm thick  
approx 160 tiles  
to a stack 160Kg



DO NOT SCALE - IF IN DOUBT ASK	PROJECTION	REVISION	BY	DATE	CHECKED	REV
		Guards Changed + Machine made wider	D.J.M	20/08		2



This drawing is the intellectual property of ATOM Cutting Systems UK Ltd. It is not to be reproduced, stored in a retrieval system, or transmitted in any form or by any means, electronic, mechanical, photocopying, recording, or by any information storage and retrieval system, without the prior written permission of ATOM Cutting Systems UK Ltd.

Unit 3  
Bullmatt Business Centre  
Northampton Road  
Rushden, Northants  
NN10 6AR  
Tel. 01933 359359

DRAWN	D.J.M
DATE	13/09/2008
CHECKED	
APPR'D	
SCALE	

TITLE	Scrap Tile Cutting Project
DWG No	AT00054
REV	2